

## ***Gingeras Lab RNA-Seq Library Production Document***

### **ENCODE Transcriptome**

Sample Description: [Cell Line] Whole Cell HCH RNA Biorep #2

RNA ID: 060WC

Library ID: LID47025

Protocol ID:

---

### **Cold Spring Harbor Laboratory**

Genome Center

500 Sunnyside Blvd

Woodbury, NY 11797

### **LAB MEMBERS**

Wet lab: Meagan Fastuca, Carrie A. Davis, Jorg Drenkow, Lei Hoon See, Huaien Wang, Kim Persaud.

Computational Lab: Alex Dobin, Sonali Jha, Wei Lin, Felix Schlesinger, Chris Zaleski.

PI: Tom Gingeras

**CELL CULTURE:** Cells received from Promocell in RNAlater.

## **RNA ISOLATION:**

**Kits: mirVana miRNA Isolation Kit (Cat #: AM1560)**

1. Thaw the cells which are in the RNAlater Buffer. Transfer the cells and RNAlater buffer to a new 15ml Falcon RNase free tube. Add 6 times volume Lysis/Binding Solution to the tube, mix them well by vortex.
2. Homogenize the sample using a syringe and 18 gauge needle. Pass sample through the needle about twenty times.
3. Add 1/10 volume of miRNA Homogenate Additive to the homogenate, and mix well by vortexing or inverting the tube several times.
4. Leave the mixture on ice for 10 min.
5. Add a volume of Acid-Phenol:Chloroform that is equal to the lysate volume before addition of the miRNA Homogenate Additive. For example, if the original lysate volume was 300  $\mu$ L, add 300  $\mu$ L Acid-Phenol:Chloroform. (Be sure to withdraw from the bottom phase in the bottle of Acid-Phenol:Chloroform, because the upper phase consists of an aqueous buffer.)
6. Vortex for 30–60 sec to mix. Leave at room temperature for 2 minutes.
7. Centrifuge for 5 min at maximum speed (10,000 x g) at room temperature to separate the aqueous and organic phases. After centrifugation, the interphase should be compact; if it is not, repeat the centrifugation.
8. Carefully remove the aqueous (upper) phase without disturbing the lower phase, and transfer it to a fresh tube (DO NOT DISCARD). Note the volume removed.

## **Separating total RNA Procedure**

1. Preheat Elution Solution to 95°C for use in eluting the RNA from the filter at the end of the procedure. If the 100% ethanol you plan to use for this procedure is stored cold, warm it to room temperature before starting the Final RNA Isolation.
2. Add 1.25 volume of 100% ethanol to the aqueous phase recovered from the organic extraction. Mix thoroughly by inverting the tube several times.
3. For each sample, place a Filter Cartridge into one of the Collection Tubes supplied. Pass the sample through a Filter Cartridge, and collect the filtrate. Up to 700  $\mu$ L can be applied to a Filter Cartridge at a time. For sample volumes greater than 700  $\mu$ L, apply the mixture in successive applications to the same filter.
4. Centrifuge for ~15 sec to pass the mixture through the filter. Centrifuge at RCF 10,000 x g (typically 10,000 rpm). Spinning harder than this may damage the filters.
5. Apply 700  $\mu$ L miRNA Wash Solution 1 (working solution mixed with ethanol) to the Filter Cartridge from above and centrifuge for ~5–10 sec or use a vacuum to pull the solution through the filter. Discard the flow-through from the Collection Tube, and replace the Filter Cartridge into the same Collection Tube.
6. Apply 500  $\mu$ L Wash Solution 2/3 (working solution mixed with ethanol) and draw it through the Filter Cartridge as in the previous step.
7. Repeat with a second 500  $\mu$ L aliquot of Wash Solution 2/3.
8. After discarding the flow-through from the last wash, replace the Filter Cartridge in the same Collection Tube and spin the assembly for 1 min to remove residual fluid from the filter.

9. Transfer the Filter Cartridge into a fresh Collection Tube (provided with the kit). Apply 100  $\mu$ L of pre-heated (95°C) nuclease-free water to the center of the filter, and close the cap. Spin for ~20–30 sec at maximum speed to recover the RNA.
10. Transfer the RNA solution to a new RNase free ependof tube. Follow by the Separating large RNA procedure.

## Separating the large RNA Procedure

1. Mix total RNA with 5 volumes Lysis/Binding Buffer.
2. Add 1/10 volume of miRNA Homogenate Additive to the RNA mixture from the previous step, and mix well by vortexing or inverting the tube several times. Leave the mixture on ice for 10 min.
3. Add 1/3 volume of 100% ethanol to the RNA mixture from the previous step. Mix thoroughly by inverting the tube several times.
4. For each sample, place a Filter Cartridge into one of the Collection Tubes supplied. Pipet the lysate/ethanol mixture (from the previous step) onto the Filter Cartridge. Up to 700  $\mu$ L can be applied to a Filter Cartridge at a time. For sample volumes greater than 700  $\mu$ L, apply the mixture in successive applications to the same filter. Centrifuge for 30 seconds to pass the mixture through the filter. Centrifuge at RCF 5,000 x g (typically 5,000 rpm). Collect the filtrate. If the RNA mixture is >700  $\mu$ L, transfer *the flow-through* to a fresh tube, and repeat until all of the RNA mixture is through the filter. Pool the collected filtrates if multiple passes were done, and measure the total volume of the filtrate (This is for small RNA.).
5. Apply 700  $\mu$ L miRNA Wash Solution 1 (working solution mixed with ethanol) to the Filter Cartridge and centrifuge for ~1 min at RCF 5,000 x g, or use vacuum to pass the solution through the filter. Discard the flow-through from the Collection Tube, and replace the Filter Cartridge into the same Collection Tube.
6. Apply 500  $\mu$ L Wash Solution 2/3 (working solution mixed with ethanol) and draw it through the Filter Cartridge as in the previous step.
7. Repeat with a second 500  $\mu$ L aliquot of Wash Solution 2/3. After discarding the flow-through from the last wash, replace the Filter Cartridge in the same Collection Tube and spin the assembly for 1 min at RCF 10,000 x g to remove residual fluid from the filter.
8. Transfer the Filter Cartridge into a fresh Collection Tube (provided with the kit). Apply 80  $\mu$ L of 95°C Elution Solution, and close the cap. Incubate at room temperature for ~2 min. Spin for 1 min at RCF 10,000 x g to recover the RNA. Repeat step 8 with a second aliquot of preheated Elution Solution.
9. Transfer the RNA solution to a new RNase free 1.5ml tube. Follow by Ethanol Precipitation.

## Ethanol Precipitation

1. Add 2.5 volumes of 100% ethanol and 1/10 volumes of NaOAc PH 5.5 (Ambion Cat. # AM9740) to the eluted RNA.
2. Freeze in -80°C for at least 30 min.
3. Centrifuge for 35 min at max speed at 4°C.
4. Pipette and discard the supernatant making sure not to touch the pellet of RNA.
5. Wash with 1 mL of 70% ethanol and centrifuge at max speed for 5 min.
6. Pipette and discard the supernatant.
7. Open the cap and speed vacuum at low heat for 3-5 min making sure that the pellet is dry.
8. Resuspend the pellet with RNase-free water.

#### DNase Digest (same for Small and Large RNA)

<i>Reagents</i>	<i>100 µL Sample (100 µg RNA max)</i>	<i>50 µL Sample (50 µg RNA max)</i>
Total RNA (100 µg max)	78 µL	39 µL
10X One-phor-all Buffer	10 µL	5 µL
10 U/µL DNase/RNase Free	8 µL	4 µL
20 U/µL RNasin/anti-RNase	4 µL	2 µL
<i>Total Volume</i>	<i>100 µL</i>	<i>50 µL</i>

1. Add all reagents to resuspended RNA and pipette to mix well.
2. Place in a 37°C waterbath for 30 min.
3. Proceed to RNA Cleanup, which is different for Small and Large RNA.

#### Large RNA Cleanup

1. Add 350 µL Buffer RLT to the 100 µL (100 µg) sample of RNA. Vortex to mix well.
2. Add 250 µL of 100% ethanol to the reaction and mix by inverting.
3. Transfer the 700 µL of sample to an RNeasy mini spin column placed in a 2 mL collection tube. Close the lid gently and centrifuge for 30 s at 8000 x g ( $\geq 10,000$  rpm). Discard the flow through.
4. Add 700 µL Buffer RW1 to the RNeasy mini spin column. Close the lid gently and centrifuge for 30 s at 8000 x g ( $\geq 10,000$  rpm). Discard the flow through.
5. Repeat Step 4.
6. Add 500 µL Buffer RPE to the RNeasy mini spin column. Close the lid gently and centrifuge for 30 s at 8000 x g ( $\geq 10,000$  rpm). Discard the flow through.
7. Repeat Step 6.
8. Transfer the RNeasy spin column to a new collection tube. Centrifuge for 2 min at 10,000 x g to dry the RNeasy membrane.
9. Place the RNeasy spin column into a new 1.5 mL collection tube and discard the old tube. Add 30-50 µL of RNase-free water directly on the spin column membrane. Close the lid gently and let stand for 1 min. Centrifuge for 1 min at 10,000 x g to elute the RNA.
10. Add another 30-50 µL of RNase-free water onto the membrane using the same centrifuge tube. Wait 1 min and then centrifuge for 1 min at 10,000 x g to elute the RNA.
11. Proceed to ethanol precipitation.

#### Ethanol Precipitation

1. Add 2.5 volumes of 100% ethanol and 1/10 volumes of NaOAc PH 5.5 to the eluted RNA.
2. Freeze in -80°C for at least 30 min.

3. Centrifuge for 30 min at max speed at 4 °C.
4. Pipette and discard the supernatant making sure not to touch the pellet of RNA.
5. Wash with 1 mL of 70% ethanol and centrifuge at max speed for 5 min.
6. Pipette and discard the supernatant.
7. Open the cap and speed vacuum at low heat for 5 min making sure that the pellet is dry.
8. Resuspend the pellet with RNase-free water.

**SPIKE-INS:** NIST Spike-Ins beta set: Pool 13. 0.5 ng added to 5 ug of RNA. Use “corrected fasta” to map against.

## Ribo Zero procedure:

Input Total RNA: 5 ug

A kit reaction will remove the 28S, 18S, 5.8S, and 5S rRNA from to 1-5 µg of input human, mouse, or rat total RNA. The total RNA preparation should be free of salts (e.g., Mg<sup>2+</sup> or guanidinium salts), and organics such as phenol and ethanol. We recommend that the sample be dissolved in RNase-Free Water or TE Buffer. Use Table 1 to determine the maximum volume in which the total RNA sample can be dissolved.

Note: This table is replicated in the reaction protocol on page 7.

Table 1. Volumes of Ribo-Zero™ Ribosomal RNA Removal Solution.

Amount of Input Total RNA		Volume of Ribo-Zero rRNA Removal Solution
Maximum Volume of Total RNA		Used per Reaction
That Can Be Added to Each Reaction		
1-2.5 µg	28 µl	8 µl
>2.5-5 µg	26 µl	10 µl

Ribo-Zero rRNA Removal Solution (Human/Mouse/Rat):

The volume of Ribo-Zero rRNA Removal Solution used in a reaction is dependent on the amount of input total RNA (Table 1).

Note: It is important to quantify the amount of total RNA in the sample as accurately as possible in order to use the appropriate amount of Ribo-Zero rRNA Removal Solution in Part B.

Ribo-Zero Microspheres:

The Ribo-Zero Microspheres must be washed prior to use. It is critical to resuspend the Ribo-Zero Microspheres into a homogeneous slurry before dispensing them into the 2-ml Wash Tube(s) (provided in the kit). The best way to resuspend the Microspheres is by vigorous vortex mixing. The Microspheres are capable of withstanding vigorous vortex mixing and remain in homogeneous suspension for several minutes after mixing. When treating multiple total RNA samples, we strongly recommend that the Microspheres be prepared separately for each sample. Do not batch-wash the Microspheres for multiple samples.

A. Prepare the Ribo-Zero Microspheres

The Ribo-Zero Microspheres must be washed using the Ribo-Zero Microsphere Wash Solution and then resuspended in the Ribo-Zero Microsphere Resuspension Solution before use.

Required in Part A

Component Name	Tube Label	Tube Color
Ribo-Zero Microspheres	Microspheres	Colorless
Ribo-Zero Microsphere Wash Solution	Microsphere Wash Solution	Green
Ribo-Zero Microsphere Resuspension Solution	Resuspension Solution	Red
RiboGuard RNase Inhibitor (100 U/µl)	RiboGuard RNase Inhibitor	Blue
Microsphere Wash Tube (2 ml)	Microsphere Wash Tube	Colorless

1. Remove the Ribo-Zero Core Kit from 4 °C storage and allow the tubes to warm to room temperature. These components must be at room temperature for use in Part A, Step 3.

Important! Allow the components of the Ribo-Zero Core Kit to equilibrate to room temperature for use in Part A, Step 3.

2. Remove the Ribo-Zero rRNA Removal Kit (Human/Mouse/Rat) from –70 °C to –80 °C storage, thaw the tubes, and place them on ice.

3. Vigorously mix the room-temperature Microspheres for 20 seconds by vortexing to produce a homogeneous suspension. The Microspheres are capable of withstanding vigorous vortex mixing and remain as a homogeneous suspension for several minutes.

4. For each reaction, pipette 65 µl of Microspheres into a separate 2-ml Microsphere Wash Tube. Aspirate the Microspheres suspension slowly to avoid air bubbles and to ensure pipetting the full required volume. Return the unused Microspheres to 4 °C.

techhelp@epicentre.com • (800) 284-8474 7

Ribo-Zero™ rRNA Removal Kit (Human/Mouse/Rat)

Important! Prepare the Microspheres for each RNA sample separately. Do not batch-wash the Microspheres for multiple samples.

5. Centrifuge the dispensed Microspheres at 12,000 x g in a bench-top microcentrifuge for 3 minutes. Remove each tube from the microcentrifuge, keeping it in the same orientation as was in the microcentrifuge, and carefully pipette off and discard the supernatant, without disturbing the Microsphere pellet.

Caution: The supernatant contains 0.1% sodium azide. Discard the supernatant according to local ordinances.

6. Wash the Microspheres by adding 130 µl of Microsphere Wash Solution to each tube. Vigorously vortex (at maximum speed) the tube(s) to resuspend the Microspheres. Centrifuge the tube(s) at 12,000 x g for 3 minutes in a bench top microcentrifuge. Remove each tube from the microcentrifuge, keeping it in the same orientation as in the microcentrifuge, and carefully pipette off and discard all of the supernatant without disturbing the Microsphere pellet.

7. Add 65 µl of Microsphere Resuspension Solution to each tube and resuspend the Microspheres by vigorous vortex mixing at maximum speed until a homogeneous suspension is produced.

8. Add 1 µl of RiboGuard RNase Inhibitor to each tube of resuspended Microspheres. Vortex briefly (10 seconds) and store the tubes at room temperature for use in Part C.

B. Treat the Total RNA Sample with Ribo-Zero rRNA Removal Solution

Required in Part B

Component Name Tube Label Tube Color

Ribo-Zero Reaction Buffer Ribo-Zero Reaction Buffer Blue

Ribo-Zero rRNA Removal Solution rRNA Removal Solution (H/M/R) Blue  
(Human/Mouse/Rat)

RNase-Free Water RNase-Free Water Colorless

Additionally required for each reaction (provided by user):

0.2-ml or 0.5-ml microcentrifuge tube (RNase-free)

Incubation temperatures performed in Part B: 68 °C and room temperature.

1. The maximum volume of the RNA sample and the volume of the Ribo-Zero rRNA Removal Solution used per reaction is dependent on the amount of total RNA in the sample (see Table below).

Amount of Input Total RNA

(see table above)

Ribo-Zero™ rRNA Removal Kit (Human/Mouse/Rat)

In a 0.2-ml or 0.5-ml RNase-free microcentrifuge tube, combine in the order given:

x µl RNase-Free Water

0.5 µl NIST controls pool 13

4 µl Ribo-Zero Reaction Buffer

5 µg Total RNA Sample (see Table above)

10 µl Ribo-Zero rRNA Removal Solution (see Table above)

40 µl Total Volume

2. Gently mix the reaction(s) and incubate at 68 °C for 10 minutes. During the incubation return the remaining Ribo-Zero rRNA Removal Solution and Ribo-Zero Reaction Buffer to storage at –70 °C to –80 °C.

Note: During the incubation, familiarize yourself with Part C, Step 1.

3. Remove the reaction tube(s) and incubate each at room temperature for 15 minutes.

C. Microsphere Reaction and rRNA Removal

Required in Part C: 50 °C water bath or heating block for 2.0-ml tubes.

1. Briefly mix by vortexing (at medium speed for about 20 seconds) the washed, room-temperature Microspheres in the 2.0-ml Wash Tube from Part A, Step 8. If necessary, pulse-centrifuge (5 seconds) to collect the Microsphere suspension in the

bottom of the tube, then resuspend by pipetting the slurry several times. It is important to have a homogeneous slurry before adding the hybridized RNA from Part B, Step 3.

2. Using a pipet, add the hybridized RNA sample from Part B, Step 3 to the resuspended Microspheres in the 2.0-ml Wash Tube and, without changing the pipet tip, immediately mix the contents of the tube by rapidly pipetting 10-15 times. Then, immediately mix by vortexing (at medium speed) the contents of the tube for 5 seconds and place at room temperature before proceeding to the next sample.

Important! Always add the RNA sample to the resuspended Microspheres in the 2-ml Wash Tube and immediately and rapidly mix by pipetting the contents of the tube. Never add the Microspheres to the RNA sample.

3. Incubate the tubes at room temperature for 10 minutes with vortex mixing (at medium speed) for 5 seconds every 3 to 4 minutes.

Important! Do not use a shaker platform as this does not provide sufficient mixing.

4. At the end of the 10-minute incubation at room temperature, mix by vortexing (at medium speed) the sample for 5 seconds and then place at 50 °C for 10 minutes in a water bath, heating block, or other temperature-controlled device.

5. After 10 minutes at 50 °C, immediately transfer the RNA-microspheres suspension to a Microsphere Removal Unit (filtration unit; provided in the Ribo-Zero Core Kit box) and centrifuge at 12,000 x g for 1 minute at room temperature. Save the eluate that is in the collection tube and discard the filter unit with the microspheres.

Important! The eluate contains the rRNA-depleted sample!

techhelp@epicentre.com • (800) 284-8474 9

Ribo-Zero™ rRNA Removal Kit (Human/Mouse/Rat)

#### D. Purification the rRNA-Depleted Sample

The rRNA-depleted sample can be purified by ethanol precipitation or by a column method. Part D.1 details the ethanol precipitation procedure and Part D.2 provides guidance for column purification using a RNA Clean & Concentrator-5 Column (Zymo Research; Cat. Nos. R1015, R1016).

#### Ethanol Precipitation

1. Adjust the volume of each sample to 180 µl using RNase-Free Water.

2. Add 18 µl of 3 M Sodium Acetate to each tube.

3. Add 2 µl of Glycogen (10 mg/ml) to each tube and mix by gentle vortexing.

4. Add three volumes (600 µl) of ice-cold 100% ethanol to each tube and mix thoroughly by gentle vortexing.

5. Place the tubes at –80 °C for at least 1/2 hour.

6. Centrifuge the tubes at >12,000 x g in a microcentrifuge for 30 minutes. Carefully remove and discard the supernatant.

7. Wash the pellet with ice-cold 70% ethanol and centrifuge at >12,000 x g for

5 minutes. Carefully remove and discard the supernatant.

8. Repeat Step 7 (above) one more time.

9. Centrifuge briefly to collect any residual supernatant. Carefully remove and discard the supernatant and allow the pellet to air dry at room temperature for 5 minutes.

10. Dissolve the pellet in 5.5 Water. The rRNA-depleted RNA can be used immediately or stored at –70 °C to –80 °C.

**LIBRARY PROTOCOL:** Adapted from... *Transcriptome analysis by strand-specific sequencing of complementary DNA* Dmitri Parkhomchuk, Tatiana Borodina, Vyacheslav Amstislavskiy, Mariya Banaru, Linda Hallen, Sylvia Krobitsch, Hans Lehrach & Alexey Soldatov.

Use all the RNA from the Ribo Zero procedure.

#### **cDNA- 1<sup>st</sup> strand:** Mix

5.5 ul sample r- RNA

2ul 50ng/ul random primers

2.5 50uM oligo-DT primer

1.25ul RNase inhibitor

Up to 12.5ul with RNase free H2O if needed

98° 2 min

70° 5 min

.1°/s ramp to 15°

15° 30 min

.1°/s ramp to 25°

25° 10 min

.1 °/s ramp to 42°  
42° 45 min  
.1 °/s ramp to 50°  
50° 15 min  
75° 15 min  
4° hold

**As soon as** 15 degrees is reached (after ~15min), pause program and add:

5ul 5X First Strand Buffer  
1.25ul .1M MgCl<sub>2</sub>  
1.25ul 10mM dNTPs  
2.5ul .1M DTT

---

22.5ul (total at this point)

After 30 minutes at 15 degrees, pause program and add (**before temp. ramp!**):

1.25ul Actinomycin-D (we have a 1mg/ml stock, dilute to 120ng/ul in 10mM Tris-Cp pH 7.6 before use)  
1.25ul Superscript III

---

25ul final volume for 1<sup>st</sup> strand reaction

Rest of reaction takes about 1 hour 40 minutes  
Then, 4 degree hold

Bring reaction volume to 100ul (add 75ul RNase free H<sub>2</sub>O)  
Add 5 volume PB (500ul) mix and apply to Minelute spin column  
Follow Qiagen Minelute cleanup protocol  
Elute 2 x 15ul EB

## **2<sup>nd</sup> Strand Synthesis**

Prepare 2<sup>nd</sup> strand mix:  
(22.5ul per sample)

1ul 5X 1<sup>st</sup> Strand Buffer  
15ul 5X 2<sup>nd</sup> Strand Buffer  
.5ul MgCl<sub>2</sub>  
1ul DTT  
2ul dUNTPs  
.5ul E. coli DNA ligase  
2ul E. coli DNA polymerase I  
.5ul RNase H

---

22.5ul

Mix:  
30ul first strand reaction  
22.5ul second strand mix  
22.5ul RNase free H<sub>2</sub>O

---

75ul final reaction volume

2 hours 16 degrees, 4 degrees hold in PCR machine  
Bringing volume to 100ul with H<sub>2</sub>O, then add 500ul PB, follow minelute cleanup protocol  
Elute 2 x 26ul (fragmentation takes place in 50ul).  
Bioanalyzer- high sensitivity DNA chip (to see if cDNA is full length, peak should be around 1000bp- if it is not, you need to lessen fragmentation time)

## **Fragment cDNA: Covaris**

If machine is not on:  
Fill appropriate chambers with autoclaved DI water



Run degas program (~30 minutes)

Transfer your 50ul cDNA sample to the sonicator tube (using pipette)

Place on machine (snaps in) and run program degas60snapcap100ul (60s sonication)

Run Bioanalyzer- high sensitivity DNA chip to check fragment size (peak should be 200-300)

### **End-Repair cDNA**

48ul sample

27ul H<sub>2</sub>O

10ul T4 DNA ligase buffer with 10mM ATP ("10X ER")

4ul dNTP mix 10mM

5ul T4 DNA polymerase 3U/ul (NEB)

1ul Klenow DNA polymerase 5U/ul (NEB)

5ul T4 PNK 10U/ul (NEB)

---

100ul final volume

Room temp. 30min.

Add 500ul PB, follow Minelute cleanup, elute 2 x 16ul

### **Addition of single <A> Base**

32ul eluted cDNA

5ul NEBuffer2

10ul dATP (1mM)

3ul Klenow fragment 3' to 5' exo- 5U/ul

---

50ul final volume

37 degrees, 30 min.

Bring volume to 100ul (add 50ul H<sub>2</sub>O), then add 500ul PB

Follow minelute cleanup, elute 1 x 19ul

### **Adapter Ligation**

19ul eluted cDNA

25ul DNA ligase buffer

1ul adapter oligo mix

5ul DNA ligase 1U/ul (Enzymatics)

---

50ul final volume

Room temp, 15 min.

Bring volume to 100ul with H<sub>2</sub>O (add 50ul), then add 500ul PB

Minelute cleanup, elute 1 x 15ul

### **UNG Treatment**

15ul eluted cDNA

1.7ul 500 mM KCl

1ul UNG

37 degrees, 15 min

95 degrees, 10 min

Hold on ice

Add 10ul loading buffer

Run on 2% Ultra-pure agarose gel for 2 hours, 70V (use 100bp ladder)

Cut out 200bp band, and another band just slightly larger (freeze larger slice, -20)

If you do not see anything on the gel at this point, do not be alarmed, cut bands anyway

Use Qiaquick gel extraction kit, elute 2 x 15ul

#### **PCR Amplification:** Mix

15ul eluted cDNA from gel-extraction (freeze remaining cDNA)- If you suspect you need more or less for good amplification, use more or less

1ul PE primer 1 25 uM

1ul PE primer 2 25 uM

50ul HF Phusion Mix

33ul H2O (adjust this volume according to how much cDNA was used)

---

100ul final PCR volume

98° 1 min

12 cycles of:

98° 10s

60° 30s

72° 30s

72° 5 min

4° hold

#### **Purification using AMPure XP beads**

Perform the following steps, at room temperature, to concentrate your DNA sample.

1. Add 0.8X volume of pre-washed AMPureXP® magnetic beads to PCR reaction. (80 ul per 100 ul PCR reaction)

Refer to the provider's instructions regarding proper use and storage of AMPureXP magnetic beads. Before using, mix the bead reagent well until the solution appears homogenous. Pipette the reagent slowly (since the bead mixture is viscous and precise volumes are critical to the purification process).

2. Mix the bead/DNA solution thoroughly. Mix the beads with the DNA by pipetting up and down or inverting the tube until the solution is homogenous.

3. Quickly spin down the tube (1 second) to collect the beads. Do not pellet beads.

4. Allow the DNA to bind to beads by shaking in a VWR® vortex mixer at 2000 rpm (room temperature) for 10 minutes. Note that the bead/DNA mixing is critical to yield. After vortexing, the bead/DNA mixture should appear homogenous.

We recommend using a VWR vortex mixer with a foam microtube attachment. If using other instrumentation, ensure that the mixing is equally vigorous. Failure to thoroughly mix the DNA with the bead reagent will result in inefficient DNA binding and reduced sample recoveries.

5. Spin down the tube (1 second) to collect beads. Do not pellet beads.

6. Place the tube in a magnetic bead rack for approximately 3 minutes to collect the beads to the side of the tube. The bead pellet is adequately formed when the solution appears clear. The actual time required to collect the beads to the side depends on the volume of beads added. Do not remove the tube from the magnetic rack.

7. Slowly pipette off cleared supernatant and discard. Avoid disturbing the bead pellet. Since the AMPureXP buffer is viscous, some beads may slide down the side of the tube during aspiration

of this buffer. If this occurs, it is preferable to leave a small volume of buffer behind to avoid aspirating beads; this residual buffer will be adequately removed during subsequent 70% ethanol washes.

8. Wash beads with freshly prepared 70% ethanol. Note that 70% ethanol is hygroscopic and should be prepared FRESH to achieve optimal results. Also, 70% ethanol should be stored in a tightly capped polypropylene tube for no more than 3 days.

- Do not remove the tube from the magnetic rack.
- Use a sufficient volume of 70% ethanol to completely cover the bead pellet (500 ul). Slowly dispense the 70% ethanol against the side of the tube opposite the beads.

- Do not disturb the bead pellet.

- After one minute, pipette and discard the 70% ethanol.

9. Repeat step 8 above.

10. Remove residual 70% ethanol and dry the bead pellet.

- Remove tube from magnetic rack and spin to pellet beads.

Both the beads and any residual 70% ethanol will be at the bottom of the tube.

- Place the tube back on magnetic rack.

- After 30 seconds, slowly pipette off any remaining 70% ethanol.

- Remove the tube from magnetic rack and allow beads to airdry (tube caps open) for up to 5 minutes. Beads can also be dried at 37C for about 4 min.

11. Elute the DNA off the beads.

- Thoroughly resuspend beads in 25 – 40 ul EB buffer (Qiagen) by pipetting up and down at least 20 times and/or vortexing. If beads appear over-dried or cracked, pipette vigorously to resuspend beads).

- Incubate the Elution Buffer with the beads for at least 2 minutes.

- Spin the tube down to pellet beads.

- Place the tube back on the magnetic tube rack and allow beads to magnetize to the side of the tube.

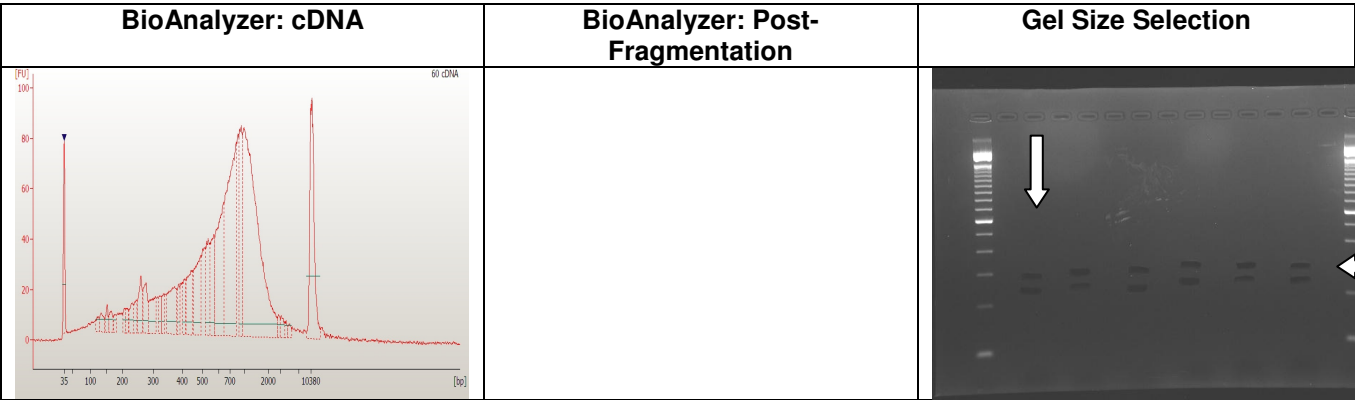
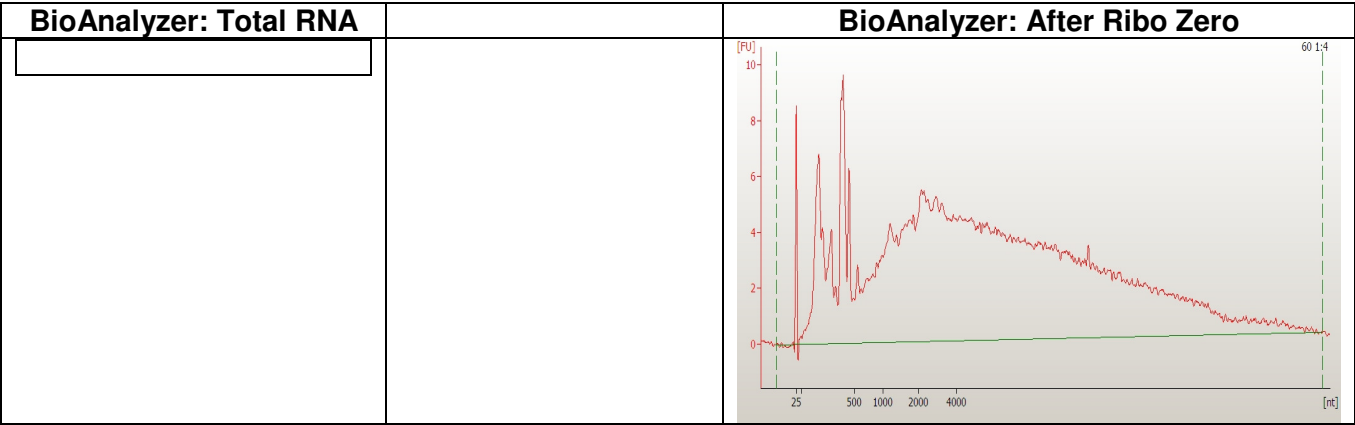
- After 30 seconds, pipette the eluted DNA into a Qiagen spin column and spin at 12000 rpm For one minute.

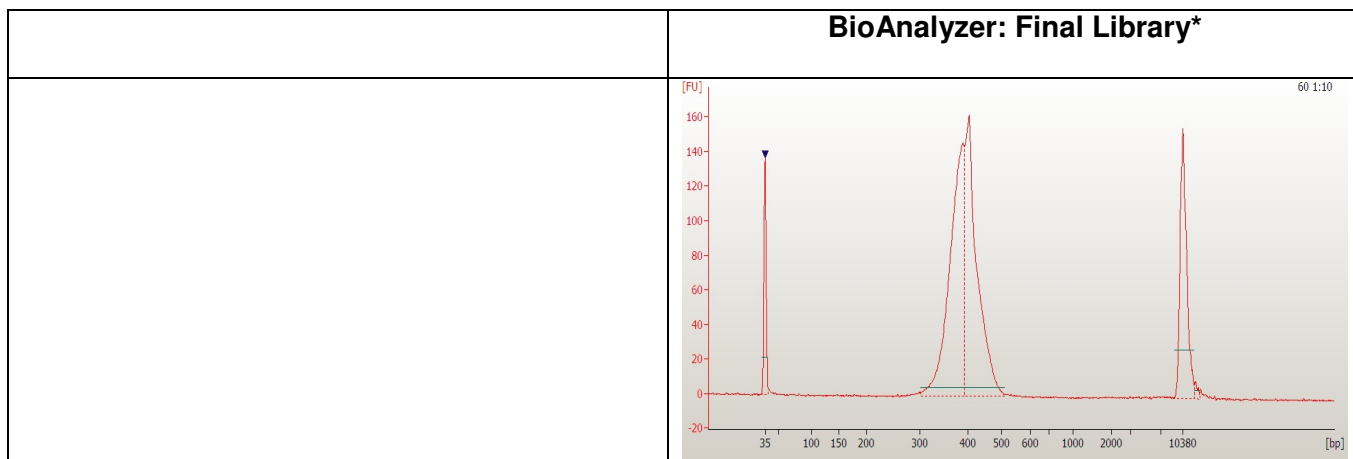
Measure library with Nanodrop (1ul) –very inaccurate.

Run High sensitivity DNA chip (1ul)

Dilute to 10nM (do not have to use whole library)

Prior to cluster generation we add PhiX at 1%.





\* Sometimes we see a doublet in the BioAnalyzer image of the final library. We take the height of the first peak to represent the library insert size when determining molarity. These doublets are not visible on gels, the libraries sequence fine and show inserts surrounding the first peak size.